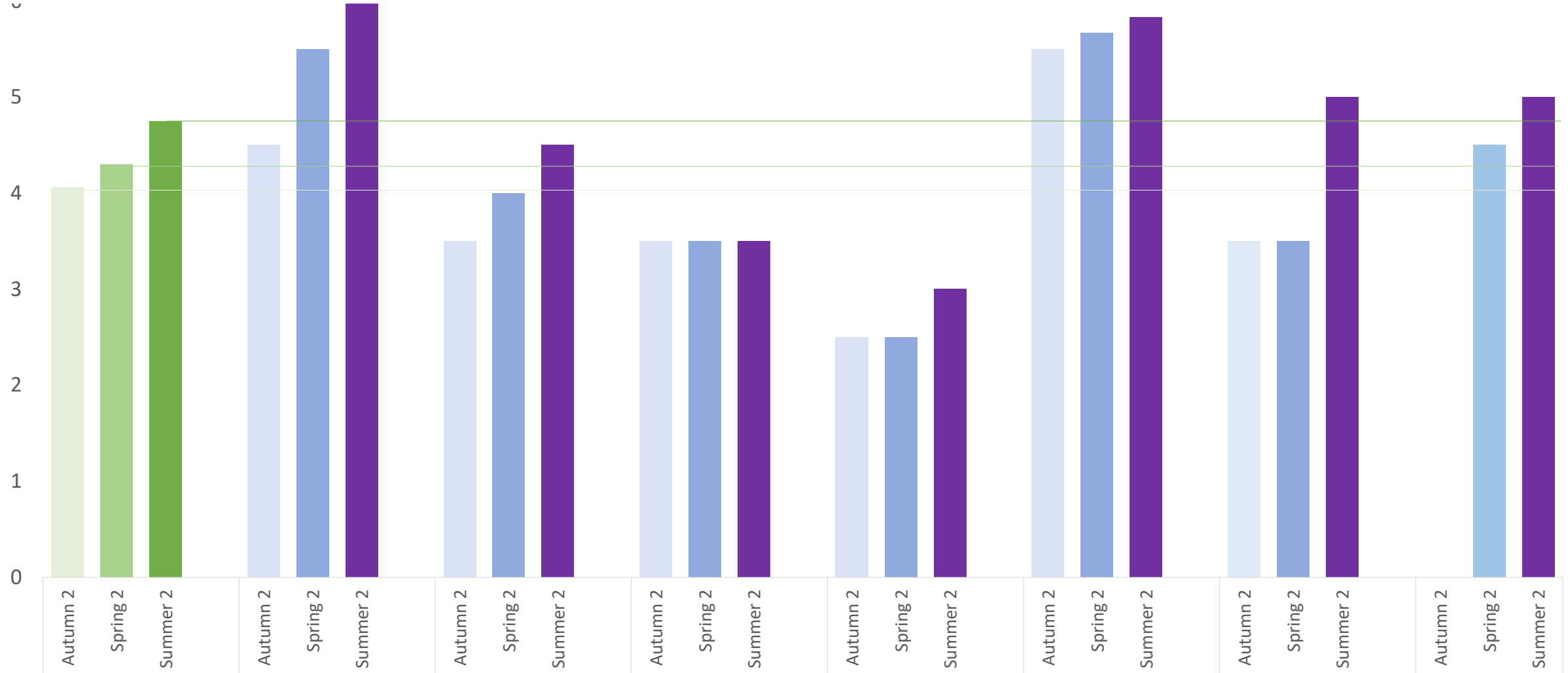


Year 7 results for Targeted Provision

Students baseline assessed end Autumn 2 – Results in blue bars show the progress of 7 individual students using the programme to Summer 2

Green bar represents overall average of these students' progress

Y axis scale shows the primary year groups (referred to as 'levels' in the programme)

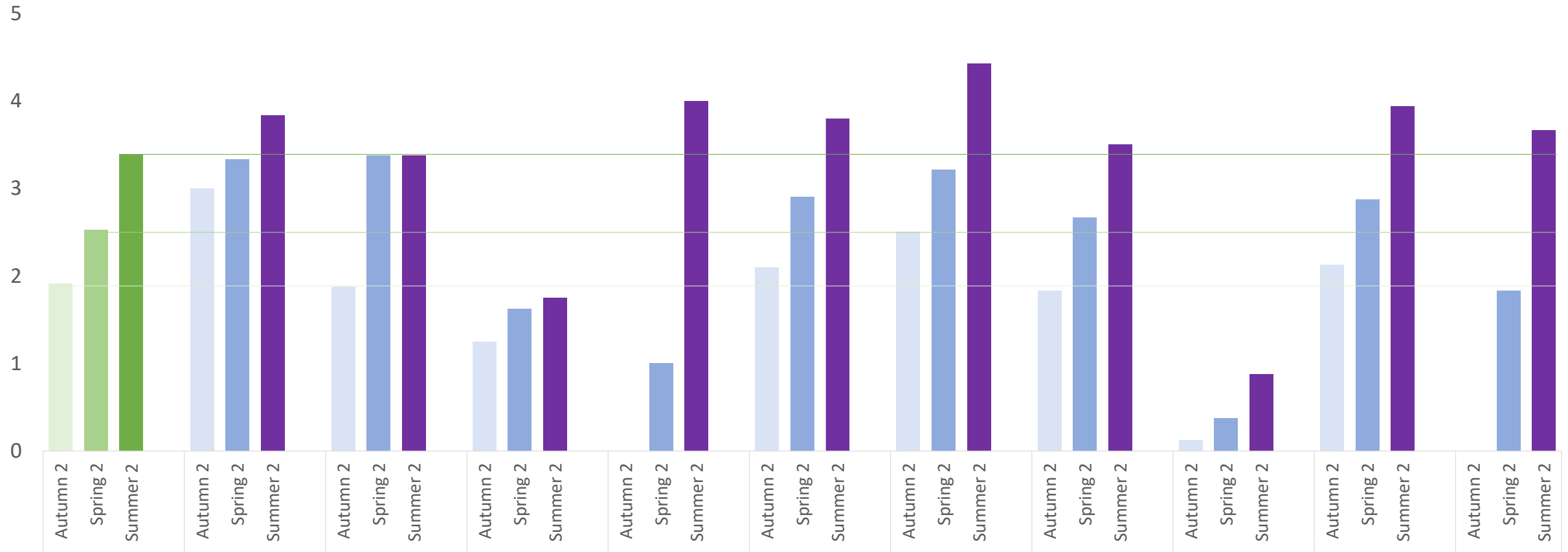


Year 7 results for **Specialist Provision**

Students baseline assessed end Autumn 2 – Results in blue bars show the progress of 10 individual students using the programme to Summer 2

Green bar represents overall average of these students' progress

Y axis scale shows the primary year groups (referred to as 'levels' in the programme)

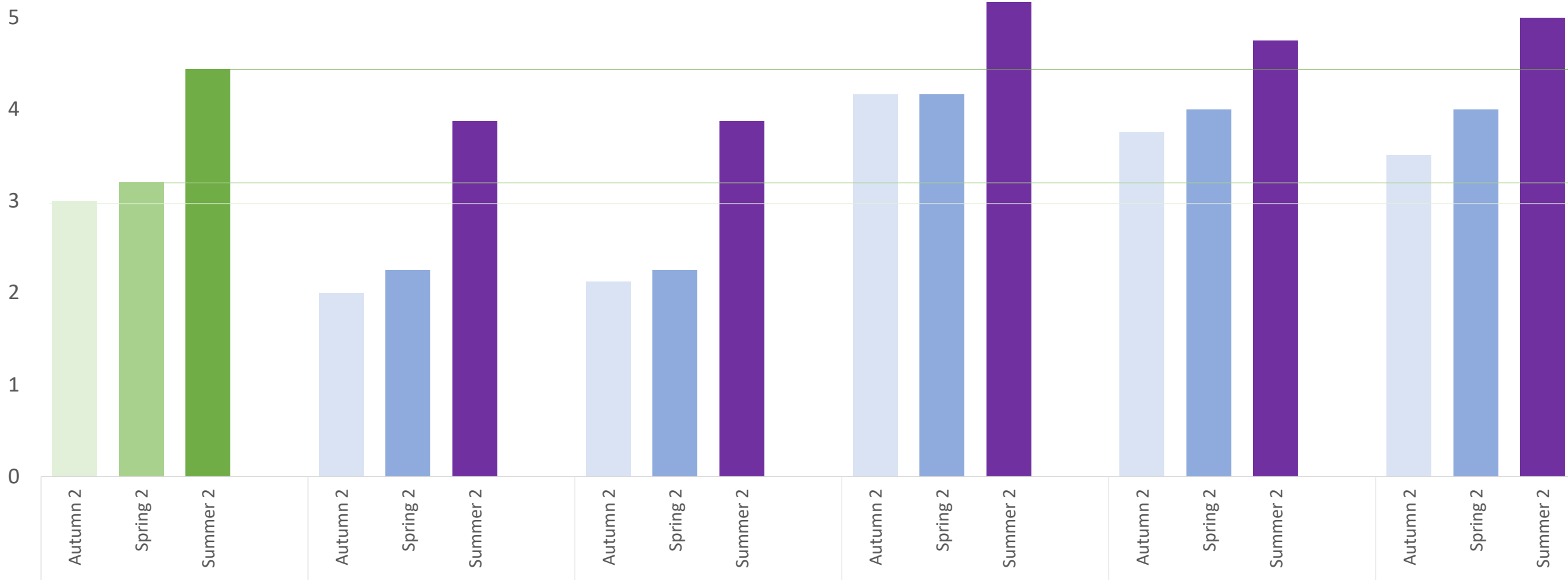


Year 8 results for Targeted Provision

Students baseline assessed end Autumn 2 – Results in blue bars show the progress of 5 individual students using the programme to Summer 2

Green bar represents overall average of these students' progress

Y axis scale shows the primary year groups (referred to as 'levels' in the programme)



Year 8 results for **Specialist Provision**

Students baseline assessed end Autumn 2 – Results in blue bars show the progress of 3 individual students using the programme to Summer 2

Green bar represents overall average of these students' progress

Y axis scale shows the primary year groups (referred to as 'levels' in the programme)

